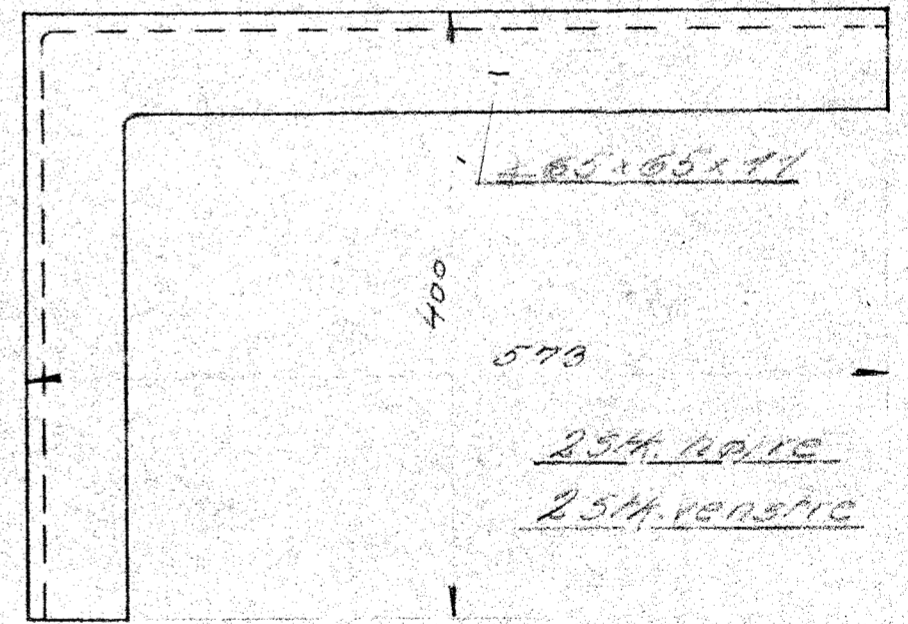
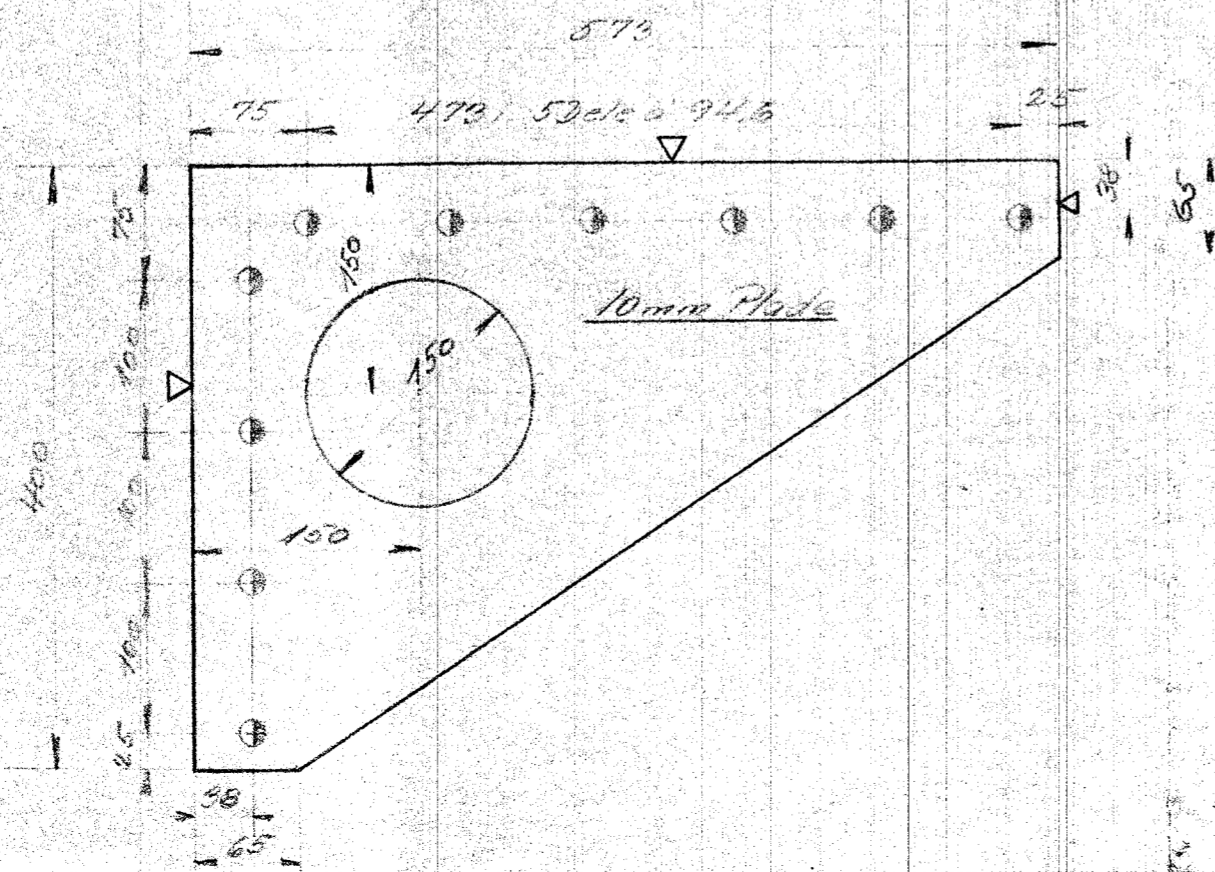
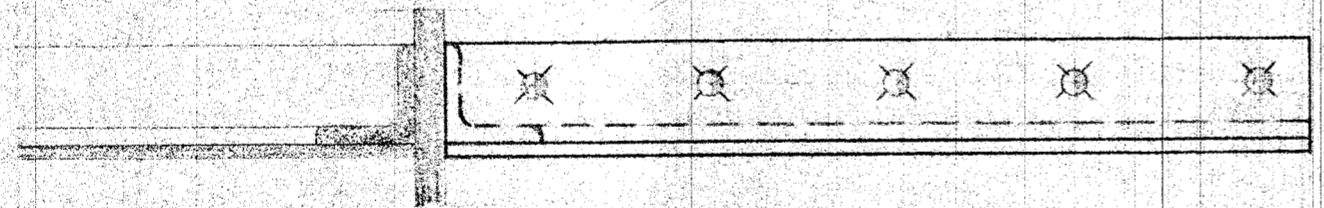


Opmærksom efter væring



Opmærksom efter Pufferplante



FRICHS AARHUS

Hjørneforbindelse v. Pufferplante
Diesel-el-410HK Motorloko.

| | | | |
|---------|----------------------|--------|-----------|
| TEGNER | <i>J.P. Sørensen</i> | TEGNET | 1993 |
| REVISOR | | STAVEN | |
| DATE | 15/8.1993 | SCALE | 1:5 |
| | | NO. | 128L-9.07 |